

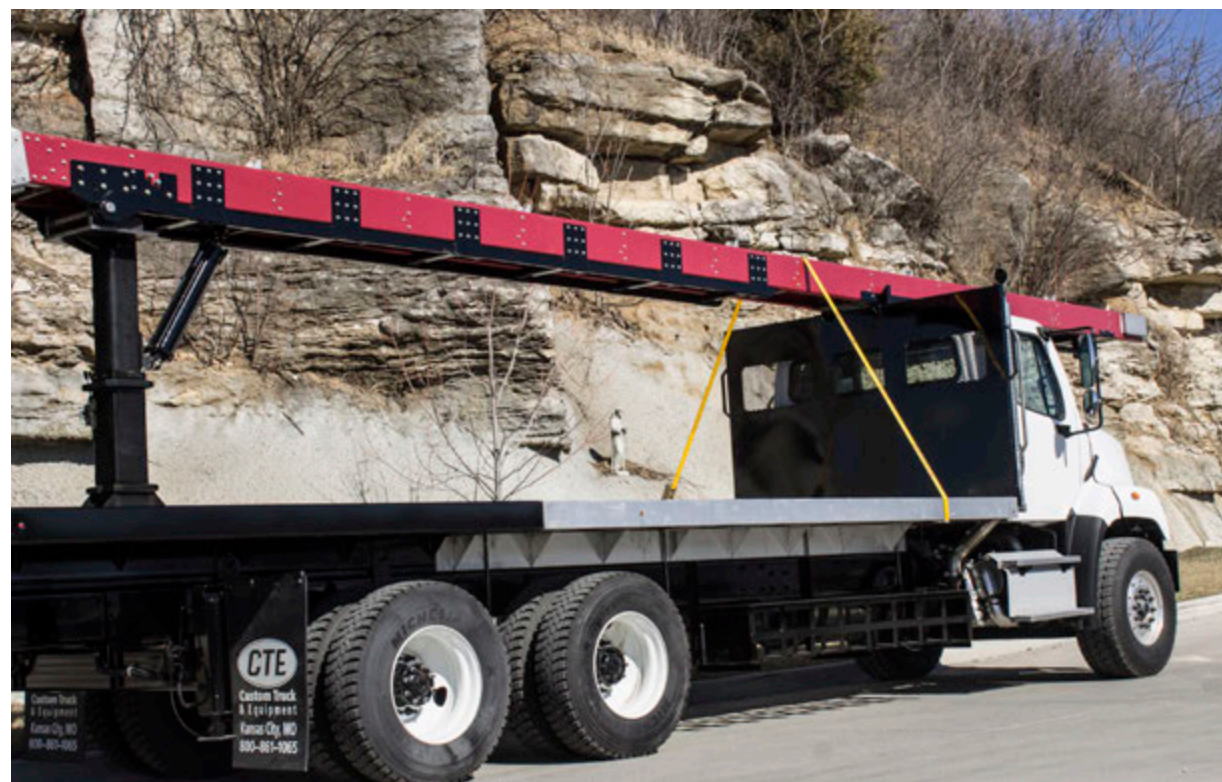


BUILDING SUPPLY p o r t f o l i o

UTILITY  SOURCE







ABOUT

CTE IS THE PROUD SUPPLIER OF A LEADING PORTFOLIO OF EQUIPMENT AND SERVICES TO THE WALLBOARD INDUSTRY, SPECIALIZING IN THE DESIGN, ASSEMBLY, CUSTOMIZATION AND AFTER MARKET SUPPORT OF PERFORMANCE - GUARANTEED CRANE TRUCKS.

ENSURING EQUIPMENT EXCELLENCE

CTE has redefined the way wallboard companies buy their trucks. No more will buyers have to settle for the equipment that distributors want their operators to have, at pricing standards they control.

CTE is the largest vocational equipment distributor in the world, IMT's #1 dealer, and the known supplier of an unparalleled range of chassis to a profusion of equipment sectors; our superior knowledge of equipment, competitive pricing structure, unmatched range of products, leading national service network and customization expertise are just some of the benefits our wallboard customers enjoy within the comprehensive suite of solutions CTE proudly services the esteemed industry.

CTE understands that your equipment is an investment, and one that should pay dividends from cradle to grave, and that downtime inhibits time and, ultimately, money. We want more uptime, we want to be the solution for equipment issues prohibiting it, and we have made the commitment to deliver this change in the industry. Whether you purchased, rented or leased your crane truck from us, or from another distributor, we will service your equipment and get you back on the job site quicker, and better equipped to get the job done; our ever-expanding footprint ensures that you experience the unprecedented uptime of our after market portfolio, 24/7, coast to coast.

LOCATIONS

ATLANTA, GEORGIA
4334 Snapfinger Woods Dr.
Decatur, GA 30035
Office: (470) 415-8040
Fax: (678) 418-7799

CABOT, ARKANSAS #1
4045 Highway 5
Cabot, AR 72023
Office: (501) 941-4330
Fax: (501) 941-2211

CABOT, ARKANSAS #2
1400 W. Locust St.
Cabot, AR 72023
Office: (501) 941-4330
Fax: (501) 286-6082

CANTON, OHIO
3522 Middlebranch Ave. NE
Canton, OH 44705
Office: (330) 546-0674
Fax: (330) 214-0172

CINNAMINSON, NEW JERSEY
1850 Union Landing Rd.
Cinnaminson, NJ 08077
Office: (856)786-7754
Fax: (856) 786-7764

DENVER, COLORADO
5455 E. 52nd Ave.
Commerce City, CO 80022
Office: (720) 519-0376
Fax: (720) 638-6358

ELKHART, INDIANA
28767 Holiday Pl.
Elkhart, IN 45617
Office: (574) 326-3312
Fax: (574) 326-3912

ELK POINT, SOUTH DAKOTA
701 East Rose St.
Elk Point, SD 57025
Office: (888) 264-5522
Fax: (605) 356-3268

FOREST, VIRGINIA
12660 E Lynchburg Salem Tpk.
Forest, VA 24551
Office: (434) 525-2929
Fax: (434) 525-0917

FORT WORTH, TEXAS #1
7200 Jack Newell Blvd. S
Forth Worth, TX 76118
Office: (682) 200-6999
Fax: (434) 525-0917

FORTH WORTH, TEXAS #2
7525 Pebble Dr.
Forth Worth, TX 76118
Office: (817) 285-6000
Fax: (682) 626-5958

HOUSTON, TEXAS
16316 Ave. C
Channelview, TX 77530
Office: (281) 452-5100
Fax: (281) 452-4460

**KANSAS CITY, MISSOURI
(HEADQUARTERS)**
7701 Independence Ave.
Kansas City, MO 64125
Office: (816) 241-4888
Toll-Free: (800) 861-1065
Fax: (816) 241-8826

OKLAHOMA CITY, OKLAHOMA
6725 SW 44th Street
Oklahoma City, OK 73179
Office: (405) 445-4110
Fax: (405) 322-5850

ROANOKE, VIRGINIA
622 Huntington Blvd.
Roanoke, VA 24014
Office: (540) 362-1861

SEDALIA, MISSOURI
2900 Rissler Rd.
Sedalia, MO 65301
Office: (660) 827-4487
Fax: (660) 827-6182

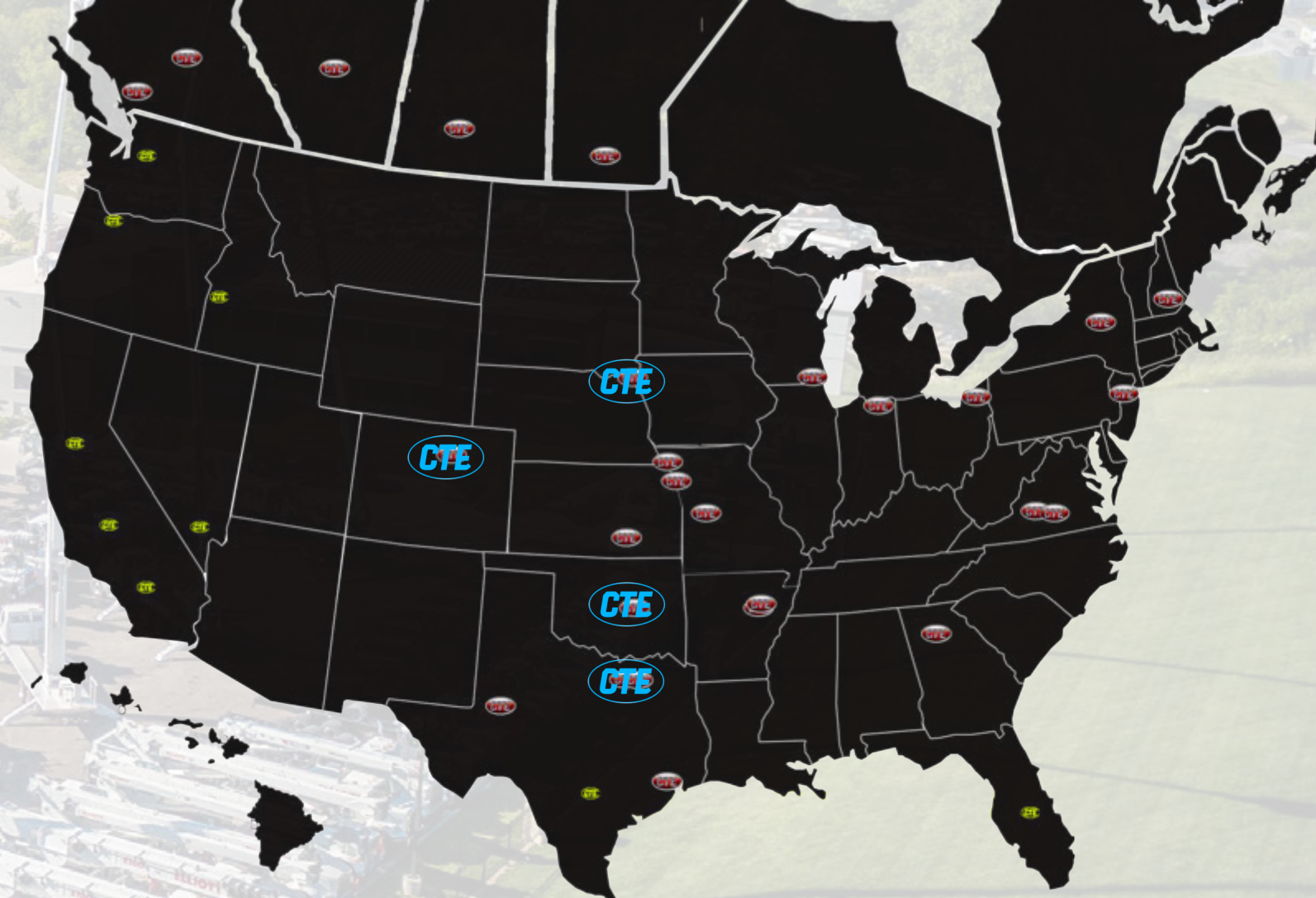
SYRACUSE, NY
6708 Townline Road
Office: (315) 455-5438
Fax: (315) 455-5454


ST. JOSEPH, MISSOURI
8000 SW 59 Highway
St. Joseph, MO 64504
Office: (816) 233-9131
Fax: (816) 233-7029

UNION GROVE, WISCONSIN
1700 Leider Dr.
Union Grove, WI 53182
Office: (262) 878-5977
Fax: (262) 553-8524

WICHITA, KANSAS
6350 N Broadway
Wichita, KS 67219
Office: (316) 444-5344
Fax: (316) 558-3868

MIDLAND, TEXAS
12210 HWY 191
Midland, TX 79707
Office: (432) 561-5677
Fax: (432) 561-5958



 current locations

 future locations

 future road shows

ROAD SHOWS

LOCATIONS	WEEK OF:
UNION GROVE, WI	4/10/2017
OKLAHOMA CITY, OK	4/20/2017
FORT WORTH, TX	4/24/2017
DENVER, CO	5/1/2017
KANSAS CITY, MO	5/8/2017



TABLE OF CONTENTS

7 roofing conveyor

9 drywall loaders

11 telescopic boom cranes

15 road tractors

16 knuckle boom cranes

17 flatbeds

20 hot shot trucks

21 box trucks & van bodies

22 rolling systems

23 forklifts

25 telehandlers

29 trailers

33 parts & service

ROOFING CONVEYORS



PREMIER



FRAME STRUCTURE

FIBERGLASS RAILS :
ENGINEERED TO SPECIFICATIONS
NEEDED FOR USE IN SHINGLE CONVEYORS.
MADE OF EXTREN 525 MANUFACTURED
BY STRONGWELL CORP.

BELT :
PVC NON-CONDUCTIVE BELTING DESIGNED
FOR SHINGLE CONVEYOR USAGE.
PADDLE ARE STAINLESS STEEL W/
RUBBER FACING FOR BETTER GRIP & LESS
SLIPPAGE

CROSS SUPPORTS :
ALL STAINLESS STEEL CONSTRUCTION.
RETURN IDLER WHEELS RUBBER COATED W/
BEARINGS.
HYDRAULIC HOSE ROUTING THROUGH THE
FRAME STRUCTURE ARE CAPTIVE
IN A HOLDER.
ALL HARDWARE (NUTS, BOLTS, WASHERS)
ARE STAINLESS STEEL.

HEAD SECTION :
ALL ALUMINUM CONSTRUCTION
W/ 1/4" BELT LAGGING.
FOUR BOLT PILLOW BLOCK STYLE BEARING
HOLDERS & BEARINGS W/ GREASE ZERKS.
STAINLESS STEEL SUPPORT PLATES & HINGED
COVER.
ADJUSTABLE DRIVE CHAIN & SPROCKET
SYSTEMS.
EMERGENCY STOP ALL COMPONENTS ARE
INTERNAL TO CONVEYOR FRAME REDUCING
CHANCE OF DAMAGING COMPONENTS.

TAIL SECTION :
ALL STAINLESS STEEL CONSTRUCTED GUARD.
FOUR BOLT PILLOW BLOCK STYLE BEARING HOLDERS
& BEARINGS W/ GREASE ZERKS.
UTILITIES A STEEL V-GUIDED BELT PULLEY
W/ 1/4" BELT LAGGING

CRADLE

STEEL W/ ONE PIECE HEAVY
GAUGE CONSTRUCTION.
MADE 17' LONG PROVIDING SUPPORT FOR CONVEY-
OR FRAME STRUCTURE.

ROOF STAND

STAINLESS STEEL ADJUSTABLE LEG.

STABILIZERS

VERTICAL LIFT TO REDUCE THE CHANCE OF ASPHALT
OR CEMENT DRIVE-AWAY SURFACE DAMAGE.
BOLT ON & REMOVABLE. CAN BE
TRANSFERRED TO ANOTHER TRUCK.

ROTATION ON CONVEYOR : 360°
HD TURNTABLE INTEGRATED TO
10' MOUNTING DECK & SUB-BASE.
MOUNTING DECK DESIGNED FOR
OPTIONAL UNIVERSAL FORKLIFT MOUNTING KIT.

LOAD DECKS AVAILABLE IN
STRUCTURAL STEEL & ALUMINUM
OPTIONAL ALUMINUM DECK
SAVES OVER 2,000LBS. VS. ALL STEEL.
MAST HEIGHT ADJUST : 70"
BELT LOADING HEIGHT AS LOW AS 18"
OVERALL DECK LENGTHS : 24' -28'

*CONVEYORS ARE AVAILABLE
FROM 31' - 43'

DRYWALL LOADERS



IMT 24562 LOADER

CRANE RATING: 131,655 FT-LBS.
 MAXIMUM LIFT CAPACITY: 5,000 LBS.
 LIFTING HEIGHT: 75'6"
 HORIZONTAL REACH: 62'3"
 VERTICAL REACH: 71'4"
 HYDRAULIC EXTENSION: 35'4"
 420° ROTATION
 TOP SEAT, TOP REMOTE AVAILABLE



IMT 16000 LOADER

CRANE RATING: 160,000 FT-LBS.
 MAXIMUM LIFT CAPACITY: 5,825 LBS.
 LIFTING HEIGHT: 54'3"
 HORIZONTAL REACH: 42'
 VERTICAL REACH: 54'1"
 HYDRAULIC EXTENSION: 14.5"
 450° ROTATION
 TOP SEAT CONTROL STATION



IMT 28562 LOADER

CRANE RATING: 161,490 FT-LBS.
 MAXIMUM LIFT CAPACITY: 5,700 LBS.
 LIFTING HEIGHT: 75'6"
 HORIZONTAL REACH: 62'3"
 VERTICAL REACH: 71'4"
 HYDRAULIC EXTENSION: 35'4"
 420° ROTATION
 FULLY PROPORTIONAL RADIO REMOTE



FASSI F330SE.24 LOADER

CRANE RATING : 168,485 FT-LBS.
 MAXIMUM LIFT CAPACITY : 5,950 LBS.
 LIFTING HEIGHT : 70'11"
 HORIZONTAL REACH : 58'9"
 HYDRAULIC EXTENSION : 31'4"
 420° ROTATION
 TOP SEAT CONTROL STATION

FASSI F390SE.24 LOADER

CRANE RATING : 202,524 FT-LBS.
 MAXIMUM LIFT CAPACITY : 7,500 LBS.
 LIFTING HEIGHT : 90'
 HORIZONTAL REACH : 78'11"
 HYDRAULIC EXTENSION : 51'5"
 430° ROTATION
 TOP SEAT CONTROL STATION

REFURBISHED & USED AVAILABLE



TELESCOPIC BOOM CRANES

national crane 851D - T M



51' 3-SECTION BOOM
MAX. TIP HEIGHT: 51'

EQUIPPED WITH "A" TYPE BOXED SLIDE OUTRIGGERS &
RSOD-16 REAR OUT AND DOWN STABILIZERS

SERVICEABILITY - BEARINGS ON THE BOOM EXTEND AND
RETRACT CABLES CAN BE GREASED THROUGH ACCESS HOLES
IN THE BOOM SIDE PLATES

THE STRONGER STANDARD TORSION BOX IMPROVES RIGIDITY,
REDUCES TRUCK FRAME FLEX & REDUCES THE NEED FOR
COUNTERWEIGHT

DUAL SLIDE OPERATOR STATIONS

DUAL ENGINE ACCELERATORS



national crane 800D SERIES

FEATURES :
100' FOUR-SECTION BOOM
23 TON RATING
SELF-LUBRICATION "EASY GLIDE" WEAR PADS
INTERNAL ANTI-TWO-BLOCK

23-TON MAXIMUM CAPACITY

152 FT. MAXIMUM VERTICAL REACH

109-FT. MAXIMUM VERTICAL HYDRAULIC REACH

PROPORTIONAL BOOM EXTENSION

HIGH PERFORMANCE PLANETARY WINCH

SPEEDY-REEVE BOOM TIP & SHEAVE BLOCKS

HEAVIER DUTY TORSION BOX

ADJUSTABLE SWING SPEED



national crane 9125A



26-TON RATING
125' (4 SECTION) BOOM
REAR MOUNT INSTALLATION
DUAL CONTROL STATIONS
HYDRAULIC CAPACITY ALERT WITH INTERNAL WIRE
A28 (ANTI 2 BLOCK)
BURST-OF-SPEED WINCH
375° NON. CONTINUOUS ROTATION
18' STEEL FLATBED
A-FRAME MAIN OUTRIGGERS
OUT/DOWN AUX OUTRIGGERS - MOUNTED OVER FRAME
CENTER REAR OUTRIGGER
9/16" ROTATION RESISTANT ROPE
LOAD BILL W/SWIVEL HOOK
1 SHEAVE LOAD BLOCK
TRIPLE PUMP HYDRAULICS
HOT SHIFT PTO

national crane 690H/E2



27' - 90' 4-SECTION MAIN BOOM (OPTIONAL TWO-SECTION JIB)
SIZE OPTIONS: 25' - 45'
MAX. TIP HEIGHT: 144'
20-TON RATING
690H: STANDARD HO-STYLE OUTRIGGERS
690E2: OUT-AND-DOWN OUTRIGGERS
BEARINGS ON BOOM & RETRACT CABLES -
GREASED THROUGH ACCESS HOLES IN SIDE PLATES
MENTOR LMI SYSTEM
WORK AREA DEFINITION SYSTEM
INTERNAL ANY-TWO BLOCK WIRING
STANDARD & REAR MOUNT OPTIONS
STAT-OF-THE-ART CONTROL VALVE
COMPONENTS PAINTED PRIOR TO ASSEMBLY
EASY-REEVE BOOM TIP & SHEAVE BLOCKS
STRONGER STANDARD TORSION BOX
375° ROTATION
EASY GLIDE BOOM WEAR PADS
OPTIONAL BURST OF SPEED WINCH

national crane NC14127A/H



31' - 126' 5-SECTION BOOM
134' MAX. TIP HEIGHT (MAIN BOOM)
164' MAX. TIP HEIGHT W/30' JIB
33-TON CAPACITY RATING
EASY GLIDE BOOM WEAR PADS

LMI INDICATOR:
WEATHER PROOF LCD DISPLAY
WORK AREA DEFINITION SYSTEM
VISIBLE IN FULL/LOW LIGHT

(2) SETS OF "H" STYLE OUTRIGGERS:
24'6" SPAN
REMOVABLE BALL & SOCKET ALUMINUM FOOT PADS
INDEPENDENT CONTROLS ON EA. SIDE OF CRANE

WELL-INSULATED VISION CAB:
RIGID POWER COATED STEEL STRUCTURE
AMPLE SAFETY GLASS
MULTI-POSITION SEAT W/ ARM REST MOUNTED SINGLE AXIS
CONTROLS, VENTILATION FANS, DIESEL HEATER, WIPERS,
OPTIONAL AIR CONDITIONING

BEARINGS ON BOOM EXTEND & RETRACT CABLES CAN BE
GREASED THROUGH ACCESS HOLES IN BOOM SIDE PLATES

BOOM SECTIONS SUPPORTED BY 1 HYD. EXTEND CYLINDER
HIGH PERFORMANCE PLANETARY 2-SPEED WINCH W/ DRUM
ROTATION INDICATOR & LAST LAYER INDICATOR
STATE-OF-THE-ART CONTROL VALVE
SPEEDY-REEVE BOOM TIP & SHEAVE BLOCKS
STRONGER STANDARD TORSION BOX
COMPONENTS PAINTED PRIOR TO ASSEMBLY

ROAD TRACTORS



available:
freightliner
mack
peterbilt



AIR SLIDE 5TH WHEEL
AIR & ELECTRIC LINES (COILED)
COLLECTED ON HOSETENNA
7-WAY PLUG
1/4 FENDERS ON REAR TANDEM AXLES

OPTIONS:
LED WORK LIGHTS
CHAIN RACKS
FULL FENDERS
1" STEEL PULL PLATE W/ PINTLE HITCH
TOOLBOX



KNUCKLE BOOM CRANES

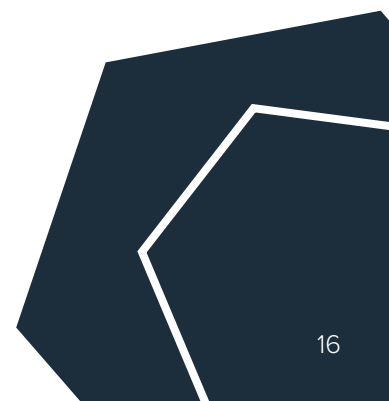
IMT, HYVA & FASSI models available

capacities ranging from 1,740 lbs to 38,185lbs

ideal for handling palletized material

excellent lift, reach capacities

precise maneuverability,
exceptional operator visibility



FLATBED UPFITS



FORKLIFT FLATBED



available in lengths ranging from 9' to 24'L

various decking options available

steel or aluminum composition

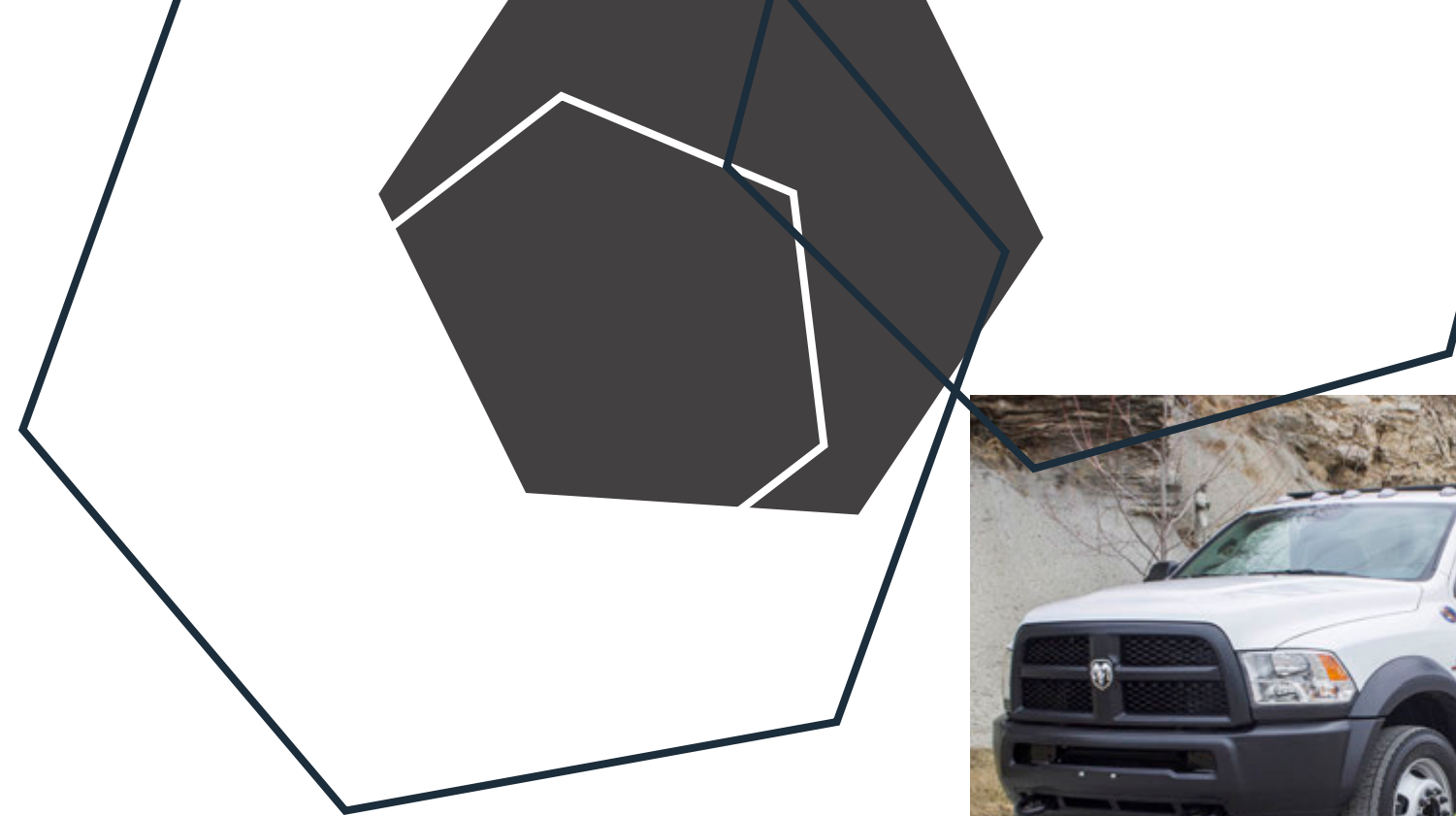
extensive toolbox, accessories available

broad selection of chassis brands & models



FLATBED DUMP

HOT SHOT TRUCKS



MODEL : PCT9612 - 3/16
 12' X 96" STRUCTURE LINE PLATFORM
 3/16" TREADPLATE FLOOR
 4" STRUCTURAL CHANNEL CROSSMEMBERS ON 12" CENTERS
 6" STRUCTURAL CHANNEL SIDE & END RAILS
 6" STRUCTURAL CHANNEL LONGSILLS
 1/4" OUTSIDE POCKETS W/ 3/8" X 2" RUB RAIL
 SLIDING WINCH TRACK FULL LENGTH ON DRIVERS SIDE
 5EA SLIDING WINCHES W/ 4" X 27' STRAP W/ FLAT HOOK
 1EA WINCH BAR
 PAINT BLACK



MODEL : PTT9612 - 3/16
 12' X 96" STRUCTURE LINE PLATFORM
 3/16" TREADPLATE FLOOR
 11 GA ROLLFORMED CROSS MEMBERS ON 12" CENTERS
 6" STRUCTURAL CHANNEL LONGSILLS
 SLIDING WINCH TRACK FULL LENGTH ON DRIVERS SIDE
 5EA SLIDING WINCHES W/ 4" X 27' STRAP W/ FLAT HOOK
 1 EA WINCH BAR
 PAINT BLACK



MODEL : RC409612 - HDS
 12' X 96" X 40" STEEL STAKE RACKS W/ 1EA SWING GATE PER SIDE, HINGED SWING OUT REAR GATES, 42" HEAVY DUTY BULKHEAD W/ EXPANDED METAL WINDOW, 2 HORIZONTAL ROWS OF E-TRACK GOING ACROSS THE BULKHEAD, AND KNEE BRACE GUSSET KIT. POWDER COAT BLACK.

BOX TRUCKS AND VAN BODIES



available in lengths ranging from 20' to 26'L

system top is skylight-style

LED lights come standard

aluminum, modular bows

greatest cargo volume market

ROLLING TARP SYSTEMS

curtain side & regular styles

extensive topper styles, including skylight

lengths of 16' to 26'

multiple axle configurations

various options, accessories available

FORKLIFTS

navigator



RT-4000

LIFT CAPACITY : 4000 LBS.
 STANDARD LIFT HEIGHT : 8 FT.
 OPTIONAL LIFT HEIGHT : 10 FT.
 OVERALL HEIGHT : 98.5 IN.
 MINIMUM MOUNTED OVERHANG : 64 IN.
 WIDTH : 100 IN.
 WEIGHT (READY TO OPERATE) : 3900 LBS.
 MAST TILT : 8°
 SIDE SHIFT : 5 IN.
 FRAME OPENING : 60 IN.
 FORK TRAVEL : 30 IN.
 DRIVE TIRES : (2) 31 X 15.5 X 15
 TRANSMISSION : HYDROSTATIC DRIVE
 ENGINE : 37 HP WATER COOLED DIESEL
 MAX TRAVEL SPEED : 9MPH



RT-5500

LIFT CAPACITY : 5500 LBS.
 STANDARD LIFT HEIGHT : 12 FT.
 OPTIONAL LIFT HEIGHT : 10 FT.
 OVERALL HEIGHT : 104.5 IN.
 MINIMUM MOUNTED OVERHANG : 75 IN.
 WIDTH : 100 IN.
 WEIGHT (READY TO OPERATE) : 5800 LBS.
 MAST TILT : 8°
 SIDE SHIFT : 5 IN.
 FRAME OPENING : 60 IN.
 FORK TRAVEL : 30 IN.
 DRIVE TIRES : (3) 31 X 15.5 X 15
 TRANSMISSION : HYDROSTATIC DRIVE
 ENGINE : 60 HP WATER COOLED DIESEL
 MAX TRAVEL SPEED : 8MPH



RT-5000

LIFT CAPACITY : 5000 LBS.
 STANDARD LIFT HEIGHT : 10 FT.
 OPTIONAL LIFT HEIGHT : 12 FT.
 OVERALL HEIGHT : 104.5 IN.
 MINIMUM MOUNTED OVERHANG : 75 IN.
 WIDTH : 100 IN.
 WEIGHT (READY TO OPERATE) : 5100 LBS.
 MAST TILT : 8°
 SIDE SHIFT : 5 IN.
 FRAME OPENING : 60 IN.
 FORK TRAVEL : 30 IN.
 DRIVE TIRES : (3) 31 X 15.5 X 15
 TRANSMISSION : HYDROSTATIC DRIVE
 ENGINE : 60 HP WATER COOLED DIESEL
 MAX TRAVEL SPEED : 8MPH



RT-6500

LIFT CAPACITY : 6500 LBS.
 STANDARD LIFT HEIGHT : 12 FT.
 OPTIONAL LIFT HEIGHT : 10 FT.
 OVERALL HEIGHT : 104.5 IN.
 MINIMUM MOUNTED OVERHANG : 75 IN.
 WIDTH : 100 IN.
 WEIGHT (READY TO OPERATE) : 6250 LBS.
 MAST TILT : 8°
 SIDE SHIFT : 5 IN.
 FRAME OPENING : 60 IN.
 FORK TRAVEL : 30 IN.
 DRIVE TIRES : (3) 31 X 15.5 X 15
 TRANSMISSION : HYDROSTATIC DRIVE
 ENGINE : 60 HP WATER COOLED DIESEL
 MAX TRAVEL SPEED : 8MPH

TELEHANDLERS



GEHL RS6-42

RATE LIFT CAPACITY: 6,600 LBS.
GROSS POWER (KW): 115HP
MAXIMUM LIFT HEIGHT: 42'0"
MAX. TRAVEL SPEED: 18.8 MPH
TURNING RADIUS: 13'8"
(10° FRAME TILT BOTH DIRECTIONS)

THREE STEERING MODELS : 4-WHEEL,
2-WHEEL, AND CRAB

TOTAL CAPACITY (L/MIN) : 40GPM (151)
SYSTEM PRESSURE : 3,000 PSI
HYDRAULIC RESERVOIR CAPACITY : 45 GAL.

ROTATING CARRIAGE : 48" & 66" WIDE

PERSONNEL WORK PLATFORM : 180" SWING
PLAT FORM & 48" X 50" X 144" PLATFORM

SWING CARRIAGE : 90° & 180° SWING

LOG AND PIPE GRAPPLE

JIB BOOM : 5' WITH WINCH AND 60' CABLE

TRUSS BOOM : 15' WITH OPTIONAL WINCH

GEHL RS8-42



PERFORMANCE:
BOOM TIP LIFT HOOK OPTION IS NOW
AVAILABLE AS A FACTORY. PROVEN WELDED
BOX-SECTION BOOM DESIGN MAKES THE BOOM STRONGER.
WELL-THOUGHT-OUT CYLINDER DESIGN PROVIDES
ONE OF THE FASTEST CYCLE TIMES IN THE INDUSTRY.
STRONG FRAME W/ REINFORCED C-CHANNELS
PERFORMS WELL UNDER HEAVY LIFTING CONDITIONS.
FRAME LEVELING FEATURE ADJUSTS 10° TO THE LEFT & RIGHT,
ENHANCING PERFORMANCE ON UNEVEN TERRAIN.
INTERNAL WET DISC BRAKES PROVIDE EXCELLENT STOPPING ABILITY
& LONG LIFE. DUAL-ELEMENT AIR FILTER PROTECTS
THE ENGINE FROM AIRBORNE CONTAMINANTS, INCREASING ENGINE
PERFORMANCE AND LONGEVITY.

RATED LIFT CAPACITY : 8,000 LBS.
GROSS POWER : 115 HP
MAXIMUM LIFT HEIGHT : 42'0"
THREE STEERING MODELS : 4-WHEEL, 2-WHEEL, AND CRAB
MAXIMUM TRAVEL SPEED : 78.8 MPH
RATED SPEED : 2,500 RPM
TOTAL CAPACITY (L/MIN) : 40 GPM
SYSTEM PRESSURE : 3,000 PSI

ROTATING CARRIAGE : 48" AND 66" WIDE
FORK SHIFT : 50" WIDE
PERSONNEL WORK PLATFORMS : 180° SWING PLATFORM AND
48" X 50" X114" PLATFORM
SWING CARRIAGE : 90° & 180° SWING
LOG & PIPE GRAPPLE
JIB BOOM : 5' W/ WINCH AND 60' CABLE



manitou MHT10225

ENGINE
ENGINE BRAND : MERCEDES
ENGINE TYPE : 3A
ENGINE HORSE POWER : 175
ELECTRONIC FUEL INJECTION

DRIVETRAIN
TRANSMISSION : HYDROSTATIC

DIMENSIONS
DRY WEIGHT : 65,560 LBS.
(W/ STANDARD FORKS)
OVERALL VEHICLE SIZE : 22.5' X 60 X 76"
GROUND CLEARANCE : 1'5"
TURNING RADIUS : 19'8"
GROUND SPEED : 15.5 MPH
LIFTING HEIGHT : 31'8"
LIFTING CAPACITY : 49,500 LBS.
HITCH/TYPE : ADJUSTABLE PIN STYLE
COOLING SYSTEM : LIQUID

FEATURES
BLOCK HEATER OPTION
AIR RIDE SEAT
FORK POSITIONER + SIDE SHIFT
FORKS, 4' X 8' X 70"
TRIPLE HYDRAULIC OUTPUT ON BOOM HEAD
WINDSHIELD PROTECTION GRILL
HEATER & AIR CONDITIONING
FULL GLASS IN CLOSED CAB
LIGHTING : ROAD & WORK LIGHTS,
LIGHTS ON BOOM
REMOTE CONTROL OPTION
BATTERY CUT OFF SWITCH
EMERGENCY BRAKE & STEERING



manitou MHT10180

LIFTING HEIGHT : 31'7"

LIFTING CAPACITY : 39,600LBS

MAX REACH : 18'3"

MAX REACH CAPACITY : 11,684LBS

DRAWBAR PULL : 35,901 LBS

MOVING SPEED : 15.5 MPH

DIMENSIONS :

LENGTH (UP TO THE BACK OF THE FORK) : 21'10"

TOTAL LENGTH (FORK INCLUDED) : 29'9"

WHEELBASE LENGTH : 12'4"

WIDTH : 8'3"

HEIGHT : 9'10"

WEIGHT (UNLADEN) : 52,910LBS

TURNING RADIUS : 18'0"

GROUND CLEARANCE : 1'5"



PUP TRAILERS

built for drywall-specific applications

lengths ranging from 14' to 16'

high strength frame with decking options available

TAG SERIES



Popular Models:
1k 1ot, 1k 1ott
1k 2ot, 1k2ott

REDESIGNED NECK FOR MORE DURABILITY & STREAMLINED APPEARANCE

GROTE MICRO-NOVA DUAL INTENSITY LED LIGHTING
STANDARD APITONG DECKING ILO ROUGH CUT OAK
2-PART EXPOXY PRIMER PAINT

HEAVY-DUTY SPRING ASSISTED RAMP'S FOR BETTER DURABILITY & EASE OF USE

AVAILABLE IN 10-25 TON CAPACITY

AVAILABLE IN TILT DECK OR STANDARD

THESE FEATURES COME STANDARD AND

SET US APART IN THE TAG INDUSTRY

THIS REDESIGNED TRAILER OFFERS SUPERIOR FEATURES AT A COMPETITIVE PRICE, MAKING IT A DOMINANT OFFERING

STEP DECK & FLATBED TRAILERS

MODEL 252 CS

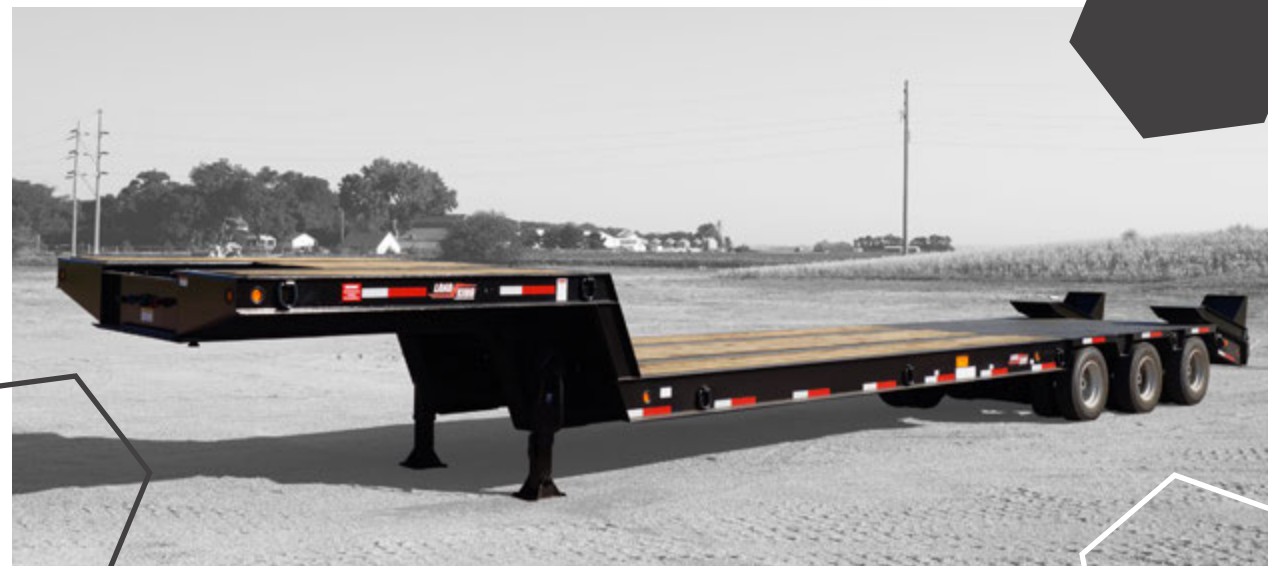
DIMENSIONS :
 50,000LB CAPACITY-EVENLY DISTRIBUTED
 OVERALL LENGTH : 38'2"
 WIDTH : 102"
 GOOSENECK : 10'3"
 DECK : 18'0"
 DECK HEIGHT : 32.5" LOADED
 SUBFRAME : 6'11"
 BEAVERTAIL : 3'0"
 WEIGHT : 10,900LBS

GOOSENECK :
 NARROW NECK
 48" KINGPIN HEIGHT
 79" SWING CLEARANCE
 15" KING PIN SETTING
 CHAIN TRAY BETWEEN MAIN BEAMS
 LANDING GEAR : FOUR POSITION DROP LEG

DECK
 CENTER BEAM FRAME DESIGN
 SIDE RAIL : STRUCTURAL CHANNEL -
 20.7LBS PER FT.
 CROSSMEMBERS : 10" WIDE FLANGE ON
 30" CENTERS
 2" NOMINAL OAK SECURED WITH
 5/16" SCREWS

SUBFRAME
 AXLES : TWO 22,500 LB OIL BATH
 SUSPENSION : HUTCH 9,700 - 44,000 LB CAPACITY
 TIRES : EIGHT 215/75R17.5 RADIALS (H)
 WHEELS : 8 HOLE STEEL DISC - HUB PIOLATED
 BRAKES : 12.25" X 7.5" DRUM STYLE AIR BRAKES
 ABS : WABCO 2S1M
 OPEN WHEEL WELLS

REAR LOADING
 BEAVERTAIL : 15° LOAD ANGLE
 RAMPS : 60" X 22.5" SPRING ASSISTED
 SURFACE : OAKWOOD DECKING



MODEL 252 CS

DIMENSIONS :
 70,000LB CAPACITY-EVENLY DISTRIBUTED
 OVERALL LENGTH : 38'2"
 WIDTH : 102"
 GOOSENECK : 10'3"
 DECK : 18'0"
 DECK HEIGHT : 33" LOADED
 SUBFRAME : 6'11"
 BEAVERTAIL : 3'0"
 WEIGHT : 12,000LBS

GOOSENECK :
 NARROW NECK
 48" KINGPIN HEIGHT
 79" SWING CLEARANCE
 15" KING PIN SETTING
 CHAIN TRAY BETWEEN MAIN BEAMS
 LANDING GEAR : FOUR POSITION DROP LEG

DECK
 CENTER BEAM FRAME DESIGN
 SIDE RAIL : STRUCTURAL CHANNEL -
 20.7LBS PER FT.
 CROSSMEMBERS : 10" WIDE FLANGE ON
 30" CENTERS
 2" NOMINAL OAK SECURED WITH
 5/16" SCREWS

SUBFRAME
 AXLES : TWO 25,000 LB OIL BATH
 SUSPENSION : HUTCH 9,700 - 44,000 LB CAPACITY
 TIRES : EIGHT 215/75R17.5 RADIALS (H)
 WHEELS : 8 HOLE STEEL DISC - HUB PIOLATED
 BRAKES : 12.25" X 7.5" DRUM STYLE AIR BRAKES
 ABS : WABCO 2S1M
 OPEN WHEEL WELLS

REAR LOADING
 BEAVERTAIL : 15° LOAD ANGLE
 RAMPS : 60" X 22.5" SPRING ASSISTED
 SURFACE : OAKWOOD DECKING

MODEL 353 CS

DIMENSIONS :
 70,000LB CAPACITY-EVENLY DISTRIBUTED
 OVERALL LENGTH : 42'7"
 WIDTH : 102"
 GOOSENECK : 10'6"
 DECK : 18'0"
 DECK HEIGHT : 33" LOADED
 SUBFRAME : 11'1"
 BEAVERTAIL : 3'0"
 WEIGHT : 14,500LBS

GOOSENECK :
 NARROW NECK
 48" KINGPIN HEIGHT
 82" SWING CLEARANCE
 15" KING PIN SETTING
 CHAIN TRAY BETWEEN MAIN BEAMS
 LANDING GEAR : FOUR POSITION DROP LEG

DECK
 CENTER BEAM FRAME DESIGN
 SIDE RAIL : STRUCTURAL CHANNEL -
 20.7LBS PER FT.
 CROSSMEMBERS : 10" WIDE FLANGE ON
 30" CENTERS
 2" NOMINAL OAK SECURED WITH
 5/16" SCREWS

SUBFRAME
 AXLES : TWO 25,000 LB OIL BATH
 SUSPENSION : HUTCH 9,700 - 66,000 LB CAPACITY
 TIRES : EIGHT 235/75R17.5 RADIALS (H)
 WHEELS : 8 HOLE STEEL DISC - HUB PIOLATED
 BRAKES : 12.25" X 7.5" DRUM STYLE AIR BRAKES
 ABS : WABCO 2S1M
 OPEN WHEEL WELLS

REAR LOADING
 BEAVERTAIL : 15° LOAD ANGLE
 RAMPS : 60" X 22.5" SPRING ASSISTED
 SURFACE : OAKWOOD DECKING

MODEL 203 CS

DIMENSIONS :
 100,000LB CAPACITY-EVENLY DISTRIBUTED
 OVERALL LENGTH : 41'11"
 WIDTH : 102"
 GOOSENECK : 9'10"
 DECK : 18'0"
 DECK HEIGHT : 35" LOADED
 SUBFRAME : 11'1"
 BEAVERTAIL : 3'0"
 WEIGHT : 17,500LBS

GOOSENECK :
 NARROW NECK
 48" KINGPIN HEIGHT
 79" SWING CLEARANCE
 15" KING PIN SETTING
 CHAIN TRAY BETWEEN MAIN BEAMS
 LANDING GEAR : FOUR POSITION DROP LEG

DECK
 CENTER BEAM FRAME DESIGN
 SIDE RAIL : STRUCTURAL CHANNEL -
 20.7LBS PER FT.
 CROSSMEMBERS : 10" WIDE FLANGE ON
 30" CENTERS
 2" NOMINAL OAK SECURED WITH
 5/16" SCREWS

SUBFRAME
 AXLES : THREE 25,000 LB OIL BATH
 SUSPENSION : HUTCH 9,700 - 66,000 LB CAPACITY
 TIRES : EIGHT 235/75R17.5 RADIALS (H)
 WHEELS : 8 HOLE STEEL DISC - HUB PIOLATED
 BRAKES : 12.25" X 7.5" DRUM STYLE AIR BRAKES
 ABS : WABCO 2S1M
 OPEN WHEEL WELLS

REAR LOADING
 BEAVERTAIL : 15° LOAD ANGLE
 RAMPS : 60" X 22.5" SPRING ASSISTED
 SURFACE : OAKWOOD DECKING





PARTS & SERVICE

the first comprehensive service & parts network, making the beginning of unprecedented up time for all equipment customers

we earn our position at the forefront of equipment innovation every day, we recognize the significance of valuable service & support that powerful fleets require, and we are committed to delivering better value to our customers, day after day, coast to coast.

CTE understands that, for a piece of equipment to yield a reliable and unremitting performance, day in and day out, it must be supported with superior maintenance and service.

Leveraging CTE's exclusive training facilities and proprietary education programs, we ensure that all in-house technicians, field mechanics, and parts and service representatives within the network meet CTE's Certification for equipment proficiency with comprehensive qualification across CTE's broad portfolio of carrier, chassis, and equipment manufacturers.

888-U1S-CINC (888-817-2462)

UOS PARTS PORTFOLIO

UOS' ON-HAND PARTS INVENTORY LEADS THE INDUSTRY IN RANGE, QUALITY, AND ACCESSIBILITY.

We've aligned our vast range of equipment with an equally impressive and extensive inventory of truck, tracks and equipment parts. CTE parts network offers more than \$30M in on-hand truck and vocational equipment inventory, and remains the most comprehensive after-market portfolio of its overnight delivery to all operators nationwide.



ABS ACCESSORIES
AIR BRAKE COMPONENTS
AIR DRYERS & DESICCANTS
AIR SPRINGS
ALTERNATOR & STARTERS
ANTIFREEZE / COOLANTS
AXLE & COMPONENT PARTS
BATTERIES
BEARINGS & SEALS
BELTS / HOSES
BRAKE CHAMBERS
BRAKE DRUM & ROTORS
BRAKE PAD / CALIPERS
BRASS
CABS & BODIES
CARGO CONTROLS
CLUTCHES
COOLING / HEATING
DIFFERENTIALS - REMAN
DRIVE LINES
ELECTRICAL WIRES & CABLES
ENGINES EXHAUSTS
FAN CLUTCHES
FASTENERS
FENDERS & MUDFLAPS
FIFTH WHEELS
FILTERS
FOUNDATION BRAKES

FILTERS
FOUNDATION BRAKES
HVACS
HYDRAULIC HOSES & FITTINGS
LANDING GEAR
LEAF SPRINGS
LIGHTING
MATTRESSES
OILS & LUBRICANTS
PTO & PUMPS
SEATING
SHOCK ABSORBERS
SHOP SUPPLIES
SLACK ADJUSTERS
STEERING
STORAGE BOXES
SUSPENSIONS
SWITCHES / TOGGLES
TARPS
TIRE REPAIRS
TOOLS & EQUIPMENT
TRACKED EQUIPMENT PARTS
TRAILERS
TRANS & COMPONENT PARTS
TRANSMISSIONS - REMAN
WHEELS
AND MORE

