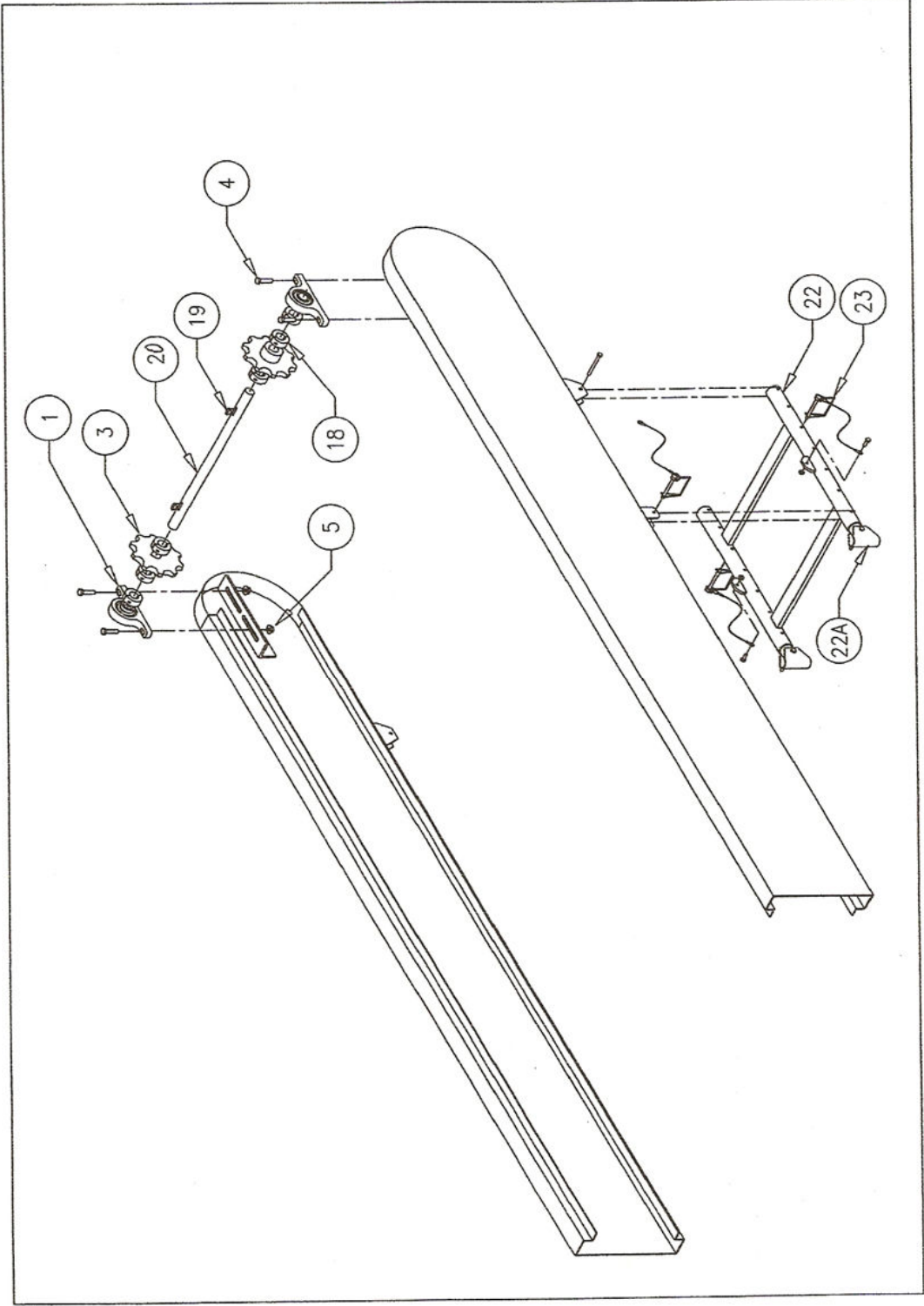


Richmond Conveyor - Charge End Exploded Parts Diagram

Charge End Assembly Parts Listing

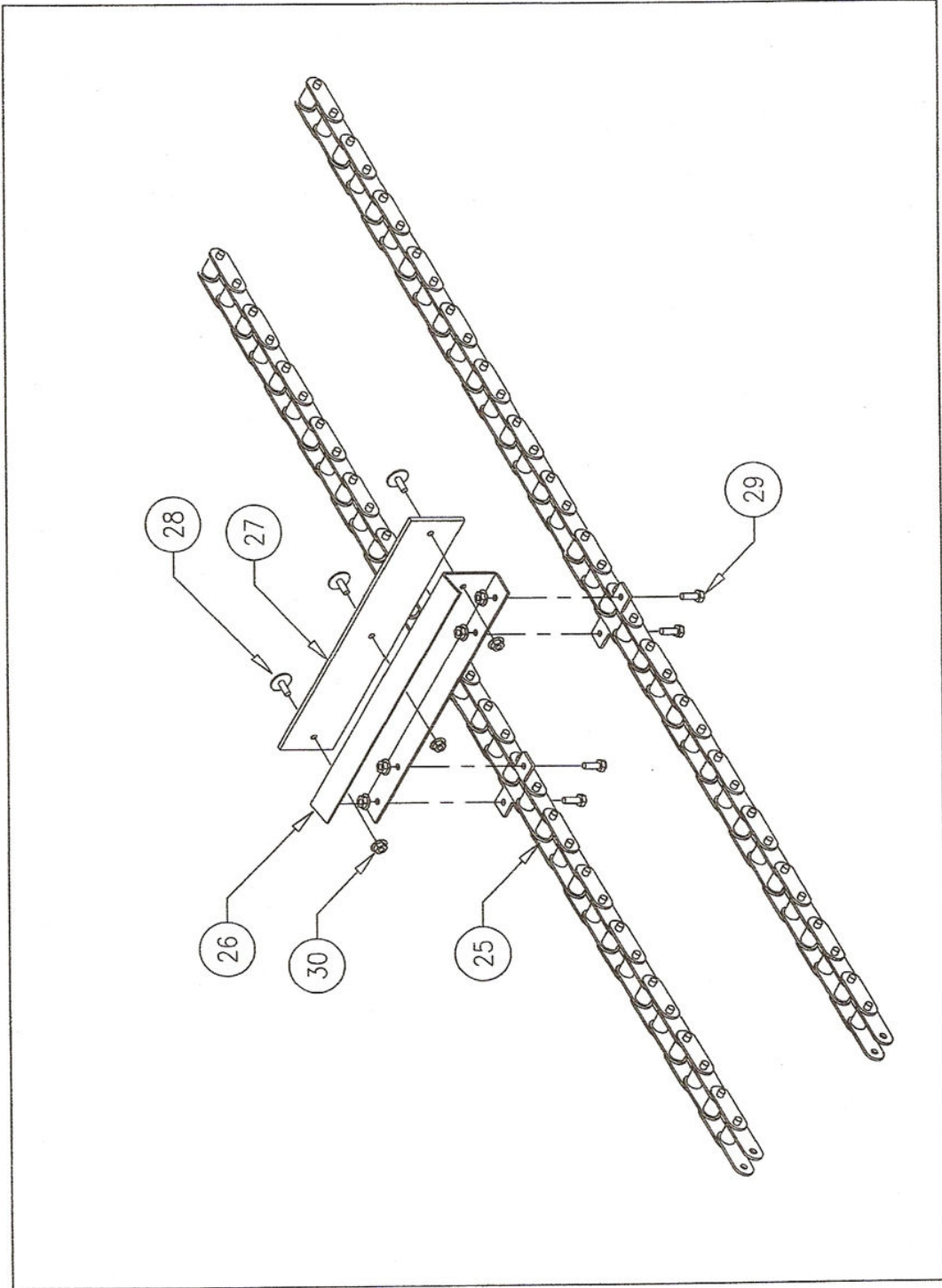
| Item | Description | Qty |
|------|--|-----|
| 1 | SAK1 Pillowblock Bearing | 2 |
| 2 | 1" Drive Shaft – CRR w/ Keyways 21" (Tail Section) | 1 |
| 3 | CA550 10x1 Sprocket w/ 1/4" Keyway | 2 |
| 4 | 3/8"-16 UNC x 1-3/4" Long | 4 |
| 5 | 3/8"-16 UNC Whiznut | 14 |
| 6 | 3/8" Flat Washer | 8 |
| 7 | 3/8"-16 UNC Lock Nut | 4 |
| 8 | Chain Tension Adjuster Plate | 2 |
| 9 | 1/2" Flat Washer | 4 |
| 10 | 1/2-13 UNC Nut | 4 |
| 11 | 1" Motor Coupler | 1 |
| 12 | Motor Bracket | 1 |
| 14 | Hydraulic Conveyor Motor | 1 |
| 15 | Charge End Cover | 1 |
| 16 | 3/8"-16 UNC x 3/4" Long | 14 |
| 17 | Riser Blocks | 2 |
| 18 | 1" Split Lock Collar | 6 |
| 19 | 1/4 x 1" Half Moon Key | 3 |



Richmond Conveyor - Discharge End Exploded Parts Diagram

Discharge End Assembly Parts Listing

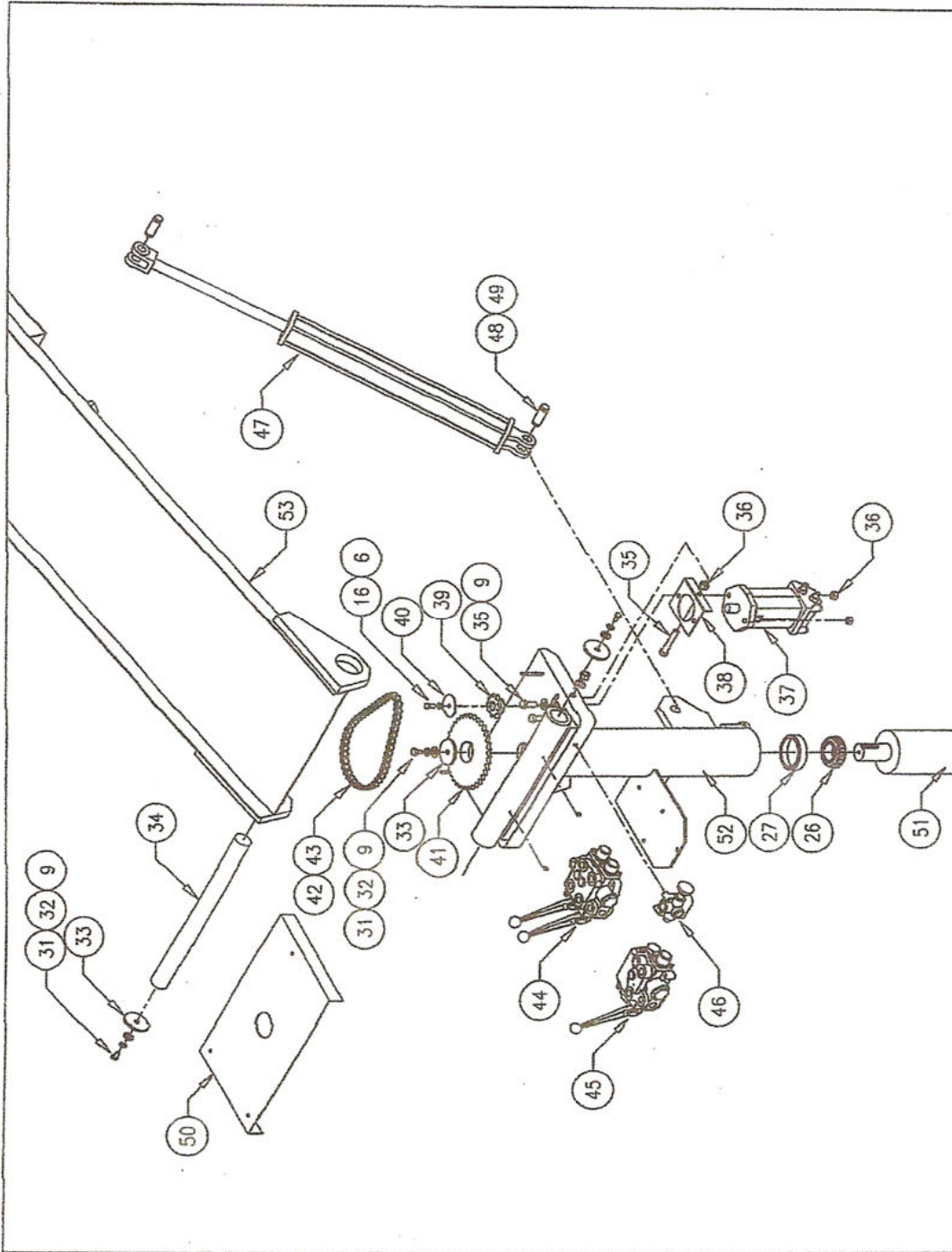
| Item | Description | Qty |
|------|---|-----|
| 1 | SAK1 Pillowblock Bearing | 2 |
| 3 | CA550 x 10 Sprocket, 1" Bore, 1/4" Keyway | 2 |
| 5 | 3/8" -16 UNC Whiznut | 16 |
| 18 | 1" Shaft Split Lock Collar | 6 |
| 19 | 1/4 x 1" Half Moon Key | 2 |
| 20 | 1" Idle Shaft - CRR w/ Keyways 19" (Head Section) | 1 |
| 21 | 3/8"-UNC x 1 1/4" Long | 4 |
| 22 | Roof Stand Assembly | 1 |
| 22A | Roof Stand Leg & Pad | 2 |
| 23 | Roof Stand Pin / Cable | 3 |



Richmond Conveyor -- Chain and Slat Exploded Parts Diagram

Chain and Slat Assembly Parts Listing

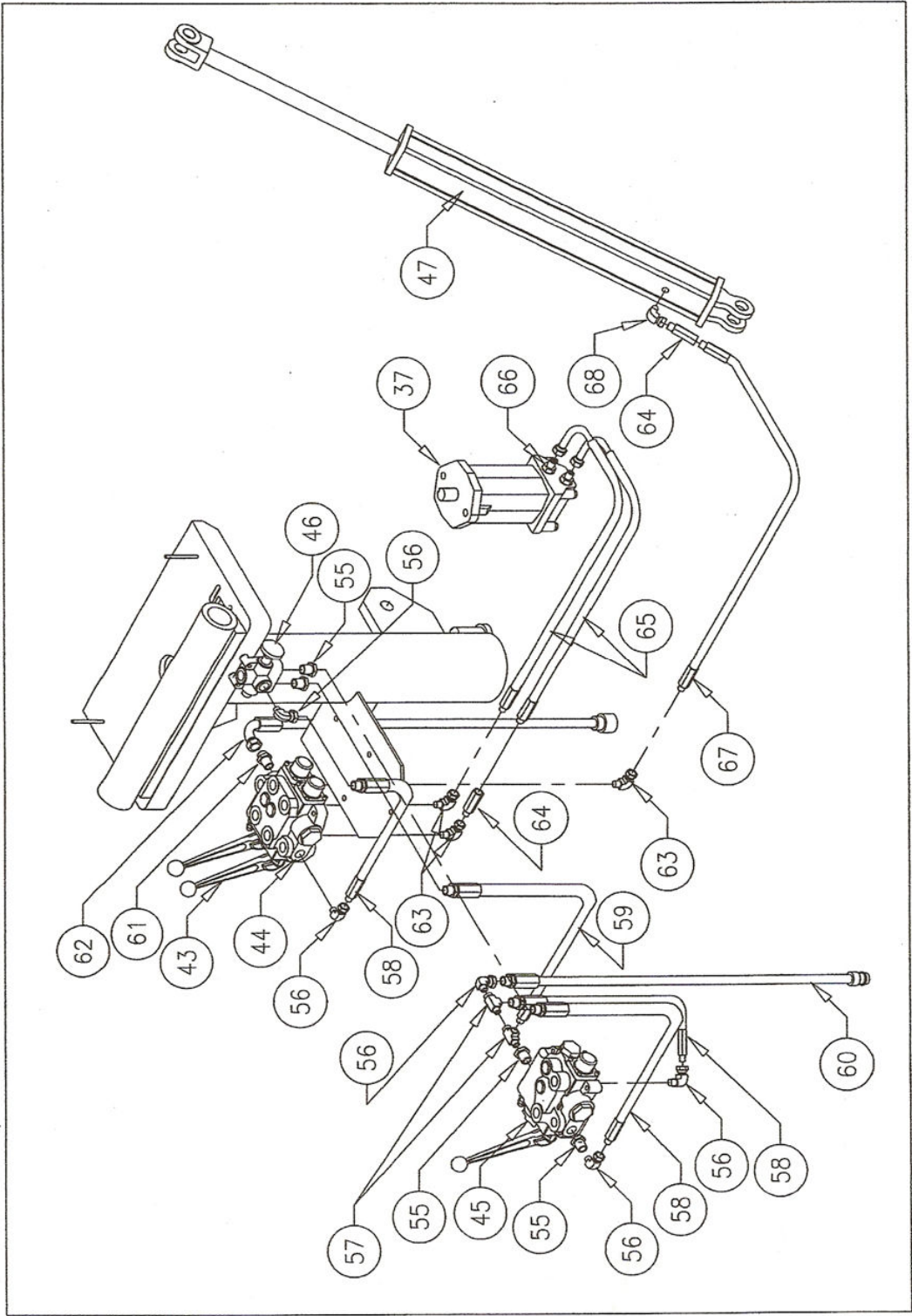
| Item | Description | Qty |
|------|-----------------------------------|-----|
| 25 | CA550 Chain with K1 Attachment | |
| 26 | Paddle w/ Rubber Assembly | |
| 27 | Rubber Pad | |
| 28 | 1/4" -20 UNC x 3/4" Elevator Bolt | |
| 29 | 1/4" -20 UNC x 3/4" Truss Bolt | |
| 30 | 1/4" -20 UNC Whiznuts | |



Richmond Conveyor – Pivot Assembly Exploded Parts Diagram

Pivot Assembly Parts Listing

| Item | Description | Qty |
|------|---|-----|
| 6 | 3/8" Flat Washer | 1 |
| 9 | 1/2" Flat Washer | 4 |
| 16 | 3/8"-16 UNC x 3/4" Hex Bolt | 1 |
| 26 | Post Rotation Pivot Bearing | 1 |
| 27 | Post Rotation Pivot Bearing Race | 1 |
| 31 | 1/2" -13 UNC x 3/4" Hex Bolt | 3 |
| 32 | 1/2" Lock Washer | 3 |
| 33 | Hinge Pin Washer | 3 |
| 34 | Hinge Pin | 1 |
| 35 | 1/2" -13 UNC x 2' Hex Bolt | 3 |
| 36 | 1/2" -13 UNC x 2' Lock Nut | 3 |
| 37 | Rotation Motor | 1 |
| 38 | Rotation Motor Adjustment Plate | 1 |
| 39 | 60BS11 x 1 1/4 Motor Sprocket | 1 |
| 40 | Retaining Plate for 11 Tooth Sprocket | 1 |
| 41 | 60BS52 x 2 Rotation Sprocket | 1 |
| 42 | RC-60 Rotation Chain | |
| 42A | RC-60 Master Link for Rotation Chain | 1 |
| 42B | RC-60 1/2 Link for Rotation Chain | 1 |
| 44 | Hydraulic Valve for Rotation & Boom Operation | 1 |
| 45 | Hydraulic Valve & Speed Control for Drive Chain | 1 |
| 46 | Emergency Stop Shutoff Valve | 1 |
| 47 | Hydraulic Lift Cylinder | 1 |
| 48 | Mounting Pin for Hydraulic Cylinder | 2 |
| 49 | Retaining Clips for Mounting Pins | 2 |
| 50 | Rotation Chain Guard Cover | 1 |
| 51 | Inner Rotational Post (Non-Telescoping) | 1 |
| 52 | Outer Post w/ Valve Plate & Hinge | 1 |
| 53 | Conveyor Cradle | 1 |



Richmond Conveyor – Hydraulic Components Exploded Parts Diagram

Hydraulic Components List

| Item | Description | Qty |
|------|---|-----|
| 37 | Rotation Motor | 1 |
| 43 | Handle for Hydraulic Valves | 3 |
| 44 | Hydraulic Valve for Rotation and Boom Operation | 1 |
| 45 | Hydraulic Valve and Speed Control for Drive Chain | 1 |
| 46 | Emergency Stop Valve | 1 |
| 47 | Hydraulic Cylinder | 1 |
| 55 | Hydraulic Bushing | 4 |
| 56 | 1/2" – 1/2" 90 degree Hydraulic Elbow Fitting | 5 |
| 57 | 1/2" Hydraulic Tee Fitting | 2 |
| 58 | Hydraulic Hose | 3 |
| 59 | Hydraulic Hose | 1 |
| 60 | Hydraulic Hose with Male Quick Coupler | 1 |
| 61 | JIC Adapter Bushing | 1 |
| 62 | Hydraulic Hose with Female Quick Couplet | 1 |
| 63 | 1/2" - 3/8" 90 degree Hydraulic Elbow Fitting | 3 |
| 64 | 3/8" Hydraulic Flow Restrictor | 2 |
| 65 | Hydraulic Hose to Pivot Motor | 2 |
| 66 | O-Ring to JIC Adaptor | 2 |
| 67 | Hydraulic Hose to Piston | 1 |
| 68 | 3/8" - 3/8" 90 degree Hydraulic Elbow Fitting | 1 |